

Upgrading the IP150 to v4.1

The following document describes how to upgrade the IP150 Internet Module to version 4.1.

Requirements

- [IP Exploring Tool](#)
- InField Firmware Upgrade Software v4.24.1 (found in BabyWare V4.7.4)
- IP150 version 4.1 firmware file
- Internet connection

To Upgrade the IP150 Module:

1. Use the IP Exploring Tool to find the IP address of the IP150 on the network.
2. In the router, set port forwarding of port 10000 (or the software port number the IP150 was changed to) to the IP150 IP address. Make sure that it is done for both internal and external ports and set for TCP and UDP.
3. Connect to the panel:
 - a. Open the InField software.
 - b. Select either the **Static IP** tab (for IP150 version below V4.0) OR the **Internet** tab and choose either **Panel S/N** or **IP/DNS** radio button and fill in the required connection details.
 - c. Select **Connect**.

InField connects to the panel and the “Product Login” **window** is displayed.

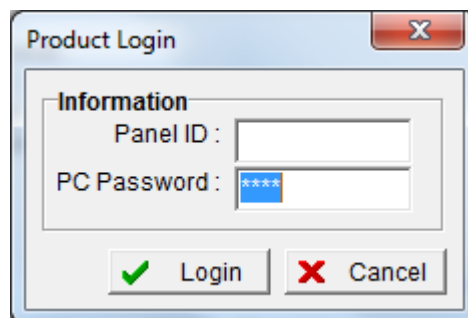


Figure 1 : Login Message

4. Enter the Panel ID and PC Password of the panel and select **Login** (0000 by default for both).

In-Field logs into the site, displaying the panel and connected modules.

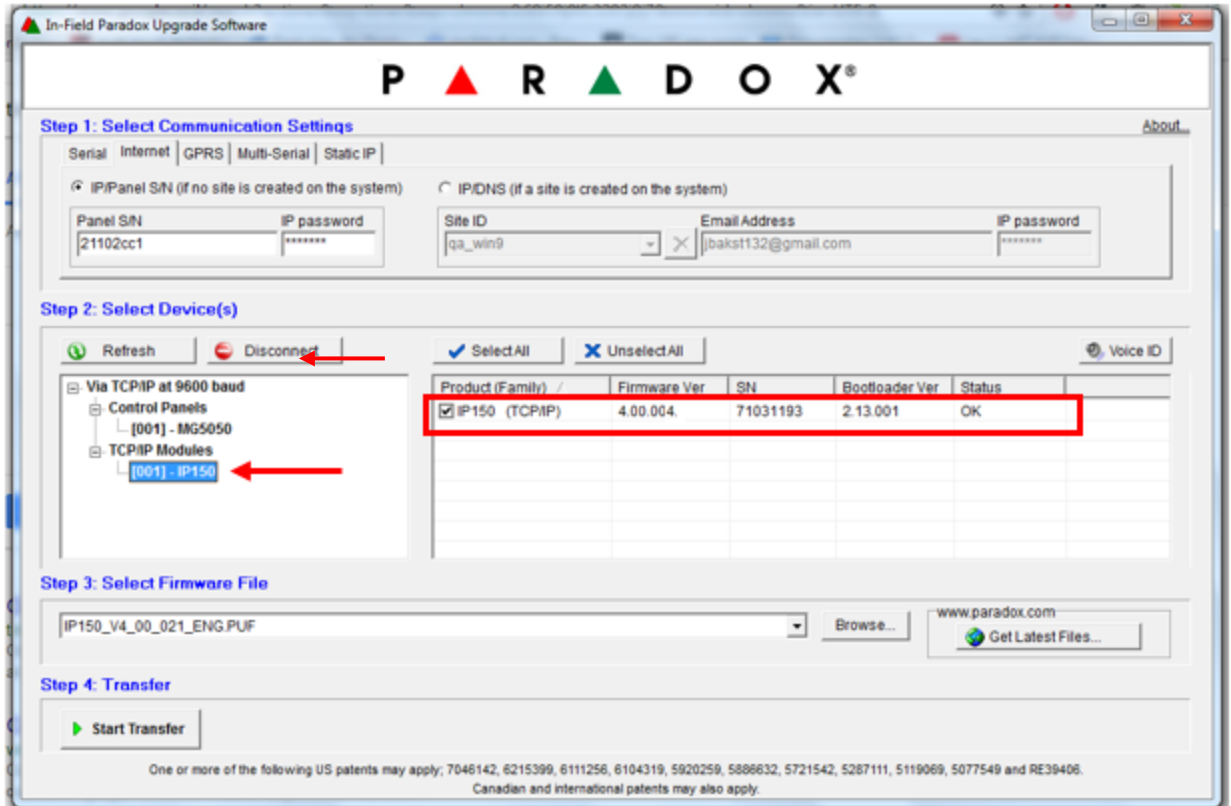


Figure 2 : InField connected to IP150

5. Select the **IP150** in the left pane of the **Select Device(s)** field.

In-Field connects to the IP150 and displays the IP150 details in the right pane of the **Select Device(s)** field.

6. Upgrade the IP150 firmware file.
 - a. Select **Browse** from the Step 3 **Select Firmware File** field.
 - b. Select version 4.1 of IP150 firmware stored on the PC/ laptop.

The selected file is displayed in the Step 3 **Select Firmware File** field.

- c. Select the **Start Transfer** button.

The upgrade process will then start.

- d. At the end of the process a “successful transfer” message will be displayed.
Do not interrupt the process as long as progress bar is moving up.

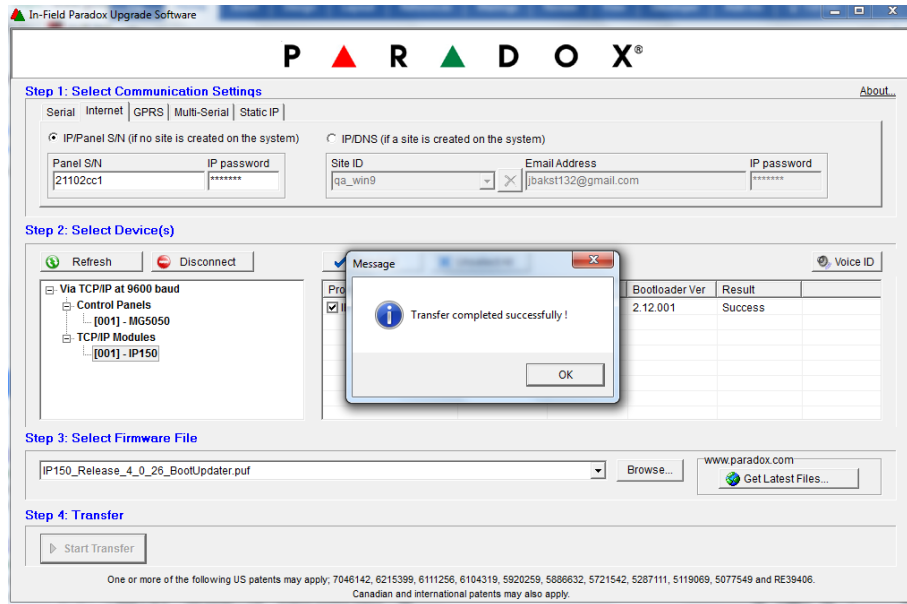


Figure 3 : Transfer Completion Message

- e. Select **OK**.

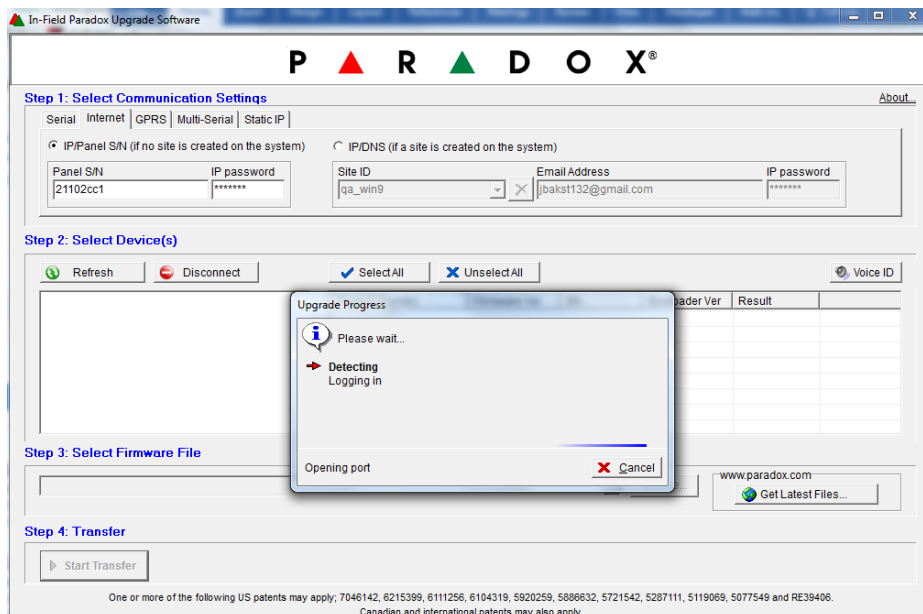


Figure 4 : Logging-in to the IP150

P ▲ R ▲ D O X™

InField logs into the IP150. (If the firmware was upgraded from a V1.0 or V3.0, press **Cancel** on the **Upgrade Progress** window, click on **Disconnect**, select the **Internet** tab, choose either **Panel S/N** or **IP/DNS** radio button, fill in the required connection detail and click on **Connect**.

- f. After logging in, the upgraded IP150 details are displayed in InField.

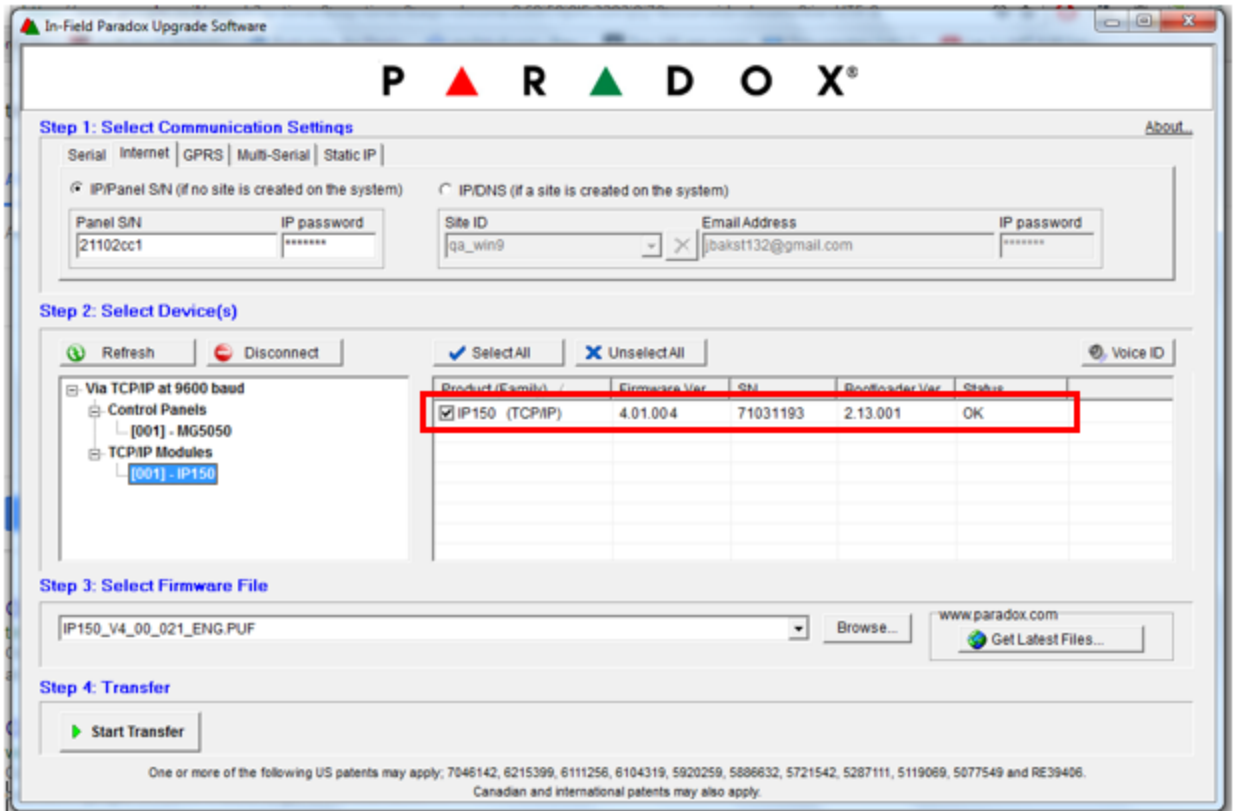


Figure 5 : Upgraded IP150 Details

- 7. The upgrade process to version 4.1 is now complete.